

Accessories: Mounting unit BMS CC-P-D12-A-00

Common Data

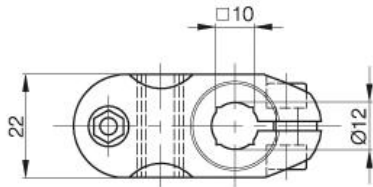
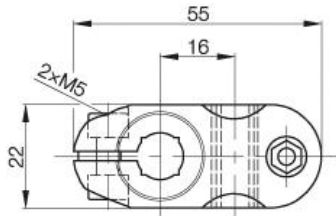
Version

Cross-connector for 2 rods $\varnothing 12$
mm or 10×10 mm

Mechanical Data

Measurements W x H x D or Dia x D
Material

55x22x22
POM



PX2173

Datasheet number::

Definitions see general catalog.

If not otherwise noted, ratings according to
IEC 60947-5-2 (DIN EN60947-5-2)

Balluff GmbH
Schurwaldstrasse 9
73765 Neuhausen a.d.F.
Phone (07158) 173-0 Fax (07158) 5010

Datenblatt by CD-ROM - 04/2007

BALLUFF
sensors worldwide